



**GHAJINI**  
T H E G A M E

# GHAJINI

T H E G A M E

FAQ



**Q. Followings error pop-up windows are observed during installation.**



**Ans:** Make sure that you are logged in with Administrator privileges during installation. The above errors are to be noticed if you are not logged in administrator account during installation procedure.

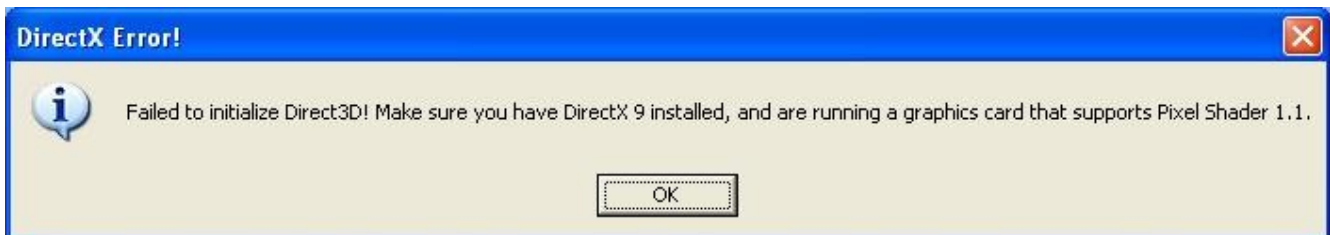
**Q. Autorun doesn't work when the cd is inserted.**

**Ans:** If the installation doesn't start, you may have Autorun disabled or you may not be in the administrator account. Double click on the **My Computer** icon on your desktop. Open the CD/DVD-ROM drive where the Ghajini CD is located. Double click on **Ghajini\_Setup.exe** to launch the Installer.

**Q: How do i view the trailers for Archie's Game and Promo video of Agni Game.**

**Ans:** Open the CD folder and go to game trailer folder to view any of the required video.

**Q. When I launch the game, I get the following error:**



**Ans:** Please check that your graphics card meets the minimum system requirement and that the latest drivers are installed. Also make sure that you have installed Service pack 2 for Windows XP and that Directx9.0c is installed. You can download Direct 9.0c from the following URL: <http://www.microsoft.com/windowsxp/sp2/default.mspx>

**Q. The game crashes after I launch it.**

**Ans:** Make sure that you are logged in with Administrator privileges. Further, some anti-virus software might interfere with the normal operation of Ghajini. Close all other applications from your taskbar and system tray and disable any memory resident software you might be running.



**Q. The gameplay is jerky and the frame-rate is very low.**

**Ans:** Make sure you system meets the minimum system requirements given below:

MINIMUM SYSTEM REQUIREMENTS	RECOMMENDED SYSTEM REQUIREMENTS
Windows® XP SP2 with admin rights*	Windows® XP SP2 with admin rights*
Intel® Pentium® 4 2.4 GHz+ or equivalent	Intel® Core™ 2 Duo or equivalent
1 GB RAM	2 GB RAM
Intel® G965**, NVIDIA GeForce® 6600 or ATI Radeon® X800	NVIDIA GeForce® 7600 or ATI Radeon® X1650
With 256 MB Video Memory	With 256 MB Video Memory
1 GB Free Hard Drive space	1 GB Free Hard Drive space
OpenAL / DirectX® 9.0c compliant Audio	OpenAL / DirectX® 9.0c compliant Audio

\* Compatible with Windows® Vista.  
\*\* Compatible with Intel® Integrated Graphics Chipset G965 and above (may require additional RAM for Shared Video Memory)

**Q: I'm running Ghajini on an Intel integrated graphics chipset running Windows XP and see white patches**

**Ans:** Ghajini requires DirectX 9.0c compliant hardware and graphics drivers. However Ghajini has been tested as working with Intel G965 integrated chipsets under Windows XP & Windows Vista with the latest Intel drivers. The newer Intel integrated chipsets run the game on both Windows XP and Vista. Please visit <http://downloadcenter.intel.com/> and download the latest drivers for your product.

**Q. My system meets the minimum system requirements, but the gameplay is still jerky and the framerates are low.**

**Ans:** Please make sure that your graphics card drivers are up to date.

If you have integrated intel chipset then please update your graphic drivers from <http://downloadcenter.intel.com/>

If you have an nVidia card you can update your drivers here.

<http://www.nvidia.com/Download/index.aspx?lang=en-us>

For ATI/AMD cards update your drivers here:

<http://ati.amd.com/support/driver.html>

**Q. I can't hear sounds during the game.**

**Ans:** Make sure your sound hardware is fully OpenAL compliant. Check if your sound drivers are installed. Please visit your soundcard vendor's website and try updating the drivers .

**Q. If I re-launch the game after a crash, I loose my weapons.**

**Ans:** On loosing weapon you can pick up the weapon by killing any of the AI's or loading the fist checkpoint of respective level.